



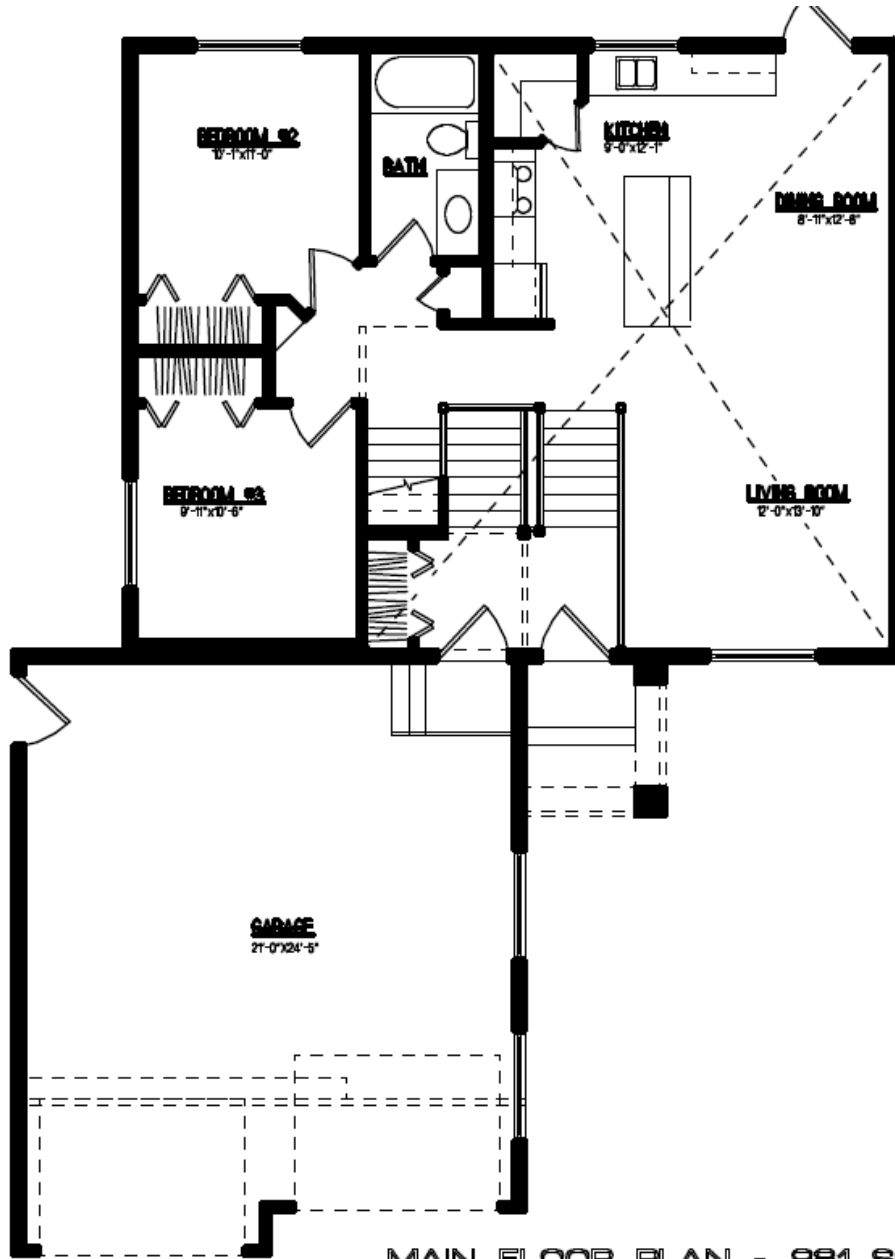
**Welcome to the Brooklyn III!**

- Popular 1431 sq/ft modified bi-level home
- Open floor plan
- Spacious living room with vaulted ceilings
- Open kitchen with a large island and walk in pantry
- 3 bedroom design
- 2 bathroom

**Starting at \$279,900.00**  
**Plus Lot, services and applicable taxes**



# JAYLIN HOMES



**MAIN FLOOR PLAN - 981 SQ. FT.**  
**GARAGE - 595 SQ. FT.**

# JAYLIN HOMES <sup>02</sup>

